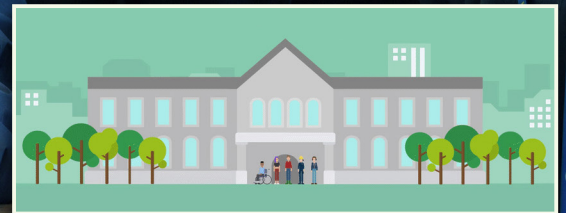


SUPPORT FOR LEARNERS

WITH ADDITIONAL LEARNING NEEDS
(PRE-ENTRY TO LEVEL 6)



PLAY ME



CONTENTS

About Coleg Sir Gâr and Coleg Ceredigion	5
Considering a College Course?	6
Letting us Know that you Need Additional Support	8
Transition Support	10
How We Support You	12
Higher Education	20
Contact Us	22

WHO DO YOU WANT TO BE?

WHAT DO YOU WANT TO BE?

WHERE DO YOU WANT TO BE?

SUPPORTING YOUR ASPIRATIONS
AT COLEG SIR GAR AND
COLEG CEREDIGION







INSPIRING LEARNERS, FULFILLING
POTENTIAL, ACHIEVING EXCELLENCE

ABOUT COLEG SIR GÂR AND COLEG CEREDIGION

Our inclusive college offers a wide range of courses in Further Education, Higher Education, Work Based Learning and commercial courses from Entry to Degree level. No matter what course you choose, you will receive a high level of support and guidance from our excellent teams of lecturing staff. Our aim is that you have an enjoyable, inspiring learning experience whilst studying at our college.

Coleg Sir Gâr and Coleg Ceredigion has a dedicated support team to support learners with additional learning needs, disabilities and medical needs from Pre-Entry to Level 6 courses.

We offer a person-centred approach for learners with Additional Learning Needs. This means that you will be included in how you would like to be supported. Our team works closely with curriculum staff to ensure that teaching and learning is accessible for all learners. All support is designed to build your independence.

“The support has been fantastic and I have always felt very well supported.”

www.colegsirgar.ac.uk
www.ceredigion.ac.uk

CONSIDERING A COLLEGE COURSE?

Studying at a new place of education is an **exciting** opportunity. We understand, however, that it may be challenging so we are here to help you through the process.

UNSURE?

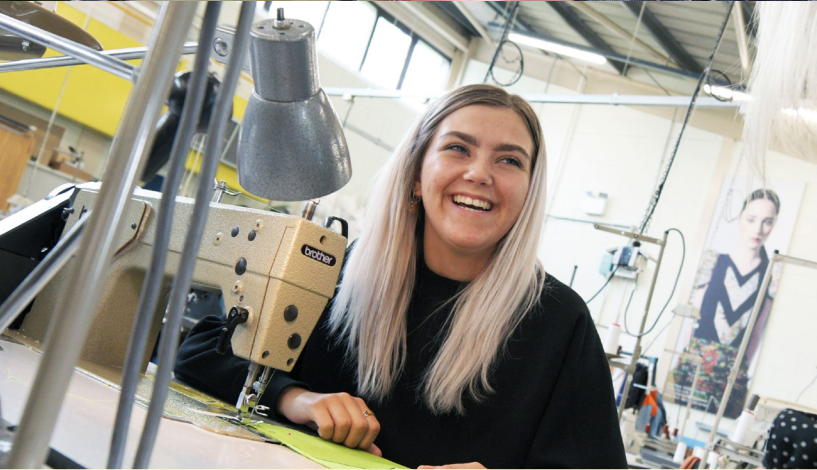
If you are not sure which course to study, you can contact our Learning Support team to discuss your **aspirations and possible options**. Our Transition Officer can support you through the process (see How to Contact Us).

SCHOOL ANNUAL REVIEW

If you have an **annual review** at school, we can attend so you can find out more about the college and courses. This can be requested through the school ALNCo, Careers Wales or by contacting us. We can also ensure that you are applying for a course that matches your aspirations or future career path, discuss your support needs and Individual Development Plan.

“My experience with Learning Support has been excellent and it has really helped me with my A levels!”





ASPIRE



**LETTING US KNOW
YOU NEED
ADDITIONAL
LEARNING
SUPPORT**

CONFIDENCE

It is very important that, if you are planning on attending college, that you advise us of your support needs at the earliest stage possible and before your interview. This is because we want to be certain that we can meet your support needs before you join our courses.

OPEN DAYS

A member of Learning Support will be available to discuss your additional learning support needs.

APPLY

If you know which course you would like to study, you can apply at www.colegsirgar.ac.uk or www.ceredigion.ac.uk. You can let us know on the **application form** that you have additional learning needs and if you require adjustments at your interview.

INTERVIEW

You can also request that a member of our Learning Support team attends the interview.

ENROLMENT

You can ask to meet a member of our team to discuss your support needs.

LEARNING SUPPORT QUESTIONNAIRE

Every learner has an opportunity to complete a questionnaire so we can find out your learning needs and preferences.

This information is shared with your subject lecturers so they can meet your needs and you can be taught in an inclusive way.

ON COURSE

If at any time on your course you feel you may need additional learning support, you can contact the Learning Support Coordinator or your tutor can refer you.

“Learning Support has been a major help and I’m so thankful for everything they’ve done to help me to work independently.”

TRANSITION SUPPORT

Choosing a new course or place to study can be **exciting** but challenging. We are here to support you through the process. We work closely with you, parents /guardians, schools and outside agencies to help ensure your transition runs smoothly.

We will:

- Meet with you to discuss your Individual Development Plan, the way in which you prefer to be supported and update your one page profile to inform staff on how best to support you at college
- Link with your parents or carers, Careers and other agencies to **gather and share information** on how best support you
- Communicate with staff who are in contact with you so they know you best to support you to achieve your aspirations and independence

It is important to us that you feel **comfortable** when you start your college course. We can offer:

- A meeting a personalised **visit** to your chosen campus so you can become familiar with a new environment and meet.
- **Summer activities** to introduce you to staff and other students.
- Planning your **transport** to college.
- Support with **enrolment**.
- Support with **settling into college life** such as meeting with you regularly, that you are able to access support and that you are making progress.

Transition support can be requested at your interview or by contacting our Transition Officer.

It is important that you provide us with any medical or learning support evidence that will help us support you at college. We can then ensure that your support is planned in advance and that, if required, an appropriate transition is organised for you.

To maintain high standards we evaluate learning support every year. Most recently, 98.6% of learners would recommend Learning Support to others.



HOW WE SUPPORT YOU

SUPPORT FOR ALL LEARNERS

Many learners at our college progress well with universal provision. This means that there is a range of support available for all.

INCLUSIVE TEACHING AND LEARNING

We celebrate a culture in which you feel included. You will be taught by subject lecturers who will put your journey at college at the heart of the process, ensuring you can access teaching and learning opportunities.

PERSONAL TUTORIALS

You will have opportunities to discuss your progress, aspirations and targets with your personal tutor on a one to one basis, along with any other issues you would like to discuss.

INCLUSIVE



LEARNING SUPPORT QUESTIONNAIRE

At the start of your course, you will have an opportunity to complete a questionnaire so we can find out your learning needs and preferences. This information is shared with your subject lecturers so they can meet your needs and so you can be taught in an inclusive way.

ASSISTIVE TECHNOLOGY

Assistive technology is available to support your independence. This is available on all our college PCs and includes reading and mind mapping software. All college Chromebooks also have the facility to use reading software and voice typing. We can advise you and teach you how to use assistive technology.

If you need additional support with assistive software, you can book a short series of sessions by contacting the Learning Support Coordinator for your campus.

ACCESS ARRANGEMENTS

All learners can access examination adjustments such as extra time, a reader, use of a PC and more if there

is evidence of need. You can let us know you need exam adjustments during the learning support questionnaire or your tutor can refer you for an assessment.

“Support with assistive software has helped get my work up to the best standard.”

WELLBEING SUPPORT

All learners can access wellbeing support via our team of mentors situated across all campuses. A brief assessment will be carried out which will determine the level of support for each individual. This could be a weekly face to face, one to one session, an online meeting, a group activity, some online self-help resource, a regular check-in by text message, or even a walk around the campus to have a quick chat! We also have a team of qualified counsellors who can offer confidential appointments if more intense support is required.

Wellbeing Officers are available to support all learners with a range of topics including student finance, getting involved in student union activities, learner voice, and everything in between.

Additional support includes Tracking & Monitoring where a dedicated team can help keep learners on track with workloads, and designated points of contact for Looked After Children, Care Leavers, Carers and Young Carers.

The Wellbeing Team support over 1000 students each year, please get in touch to find out how we can help you.

LIBRARY RESOURCE CENTRE (LRC)

Inductions, one-to-one sessions and classroom based workshops are on offer to all learners, whatever your level of course. There is access online to e-books, journals and newspapers.

We want learners to have a great place to study and do their research and with this in mind we have created different zones such as group study areas, individual study desks and quiet study areas.

QUIET SPACES

A Quiet Space is available on all campuses where, depending on numbers, you can work or relax in a quiet environment during free sessions or lunch and break times. Each Quiet Space is supervised by nearby staff.



INSPIRE



“Giving me the confidence to complete things that I thought I couldn’t do and helping me achieve deadlines has been so helpful.”

SUPPORT FOR LEARNERS WITH ADDITIONAL LEARNING NEEDS

We have a personalised approach to support learners with additional learning needs. This is so we can make sure your individual needs are met. You may require some of the support listed below.

INDIVIDUAL DEVELOPMENT PLAN

If you have an Individual Development Plan we will:

- Discuss with you how you would like to be supported at college and how to build your independence. This may be different from the way you are supported at school.
- Support you to write a one page profile to help communicate your wishes to staff who are in contact with you.
- Ensure you can access support and that your plan is updated.
- Include you in reviewing your support and planning for the future.

PERSON CENTRED

REACH

SPECIALIST LECTURING

You may be eligible for 1:1 or small group teaching from a specialist lecturer.

Support will be tailored to your needs and here are some examples of support that you may be eligible to receive:

- **Tackling assignments and report writing**
- **Organising, planning and time management**
- **Literacy and numeracy skills**
- **Exam revision**
- **Using assistive and specialist technology**
- **Improving proofreading skills**
- **Communication, emotional and social skills**
- **Confidence building with academic work**
- **One page profiles**

IN-CLASS SUPPORT

Depending on your additional learning need, you may need in-class support from a learning support assistant or an education support assistant.

WHEELCHAIR ACCESS AND ACCESSIBILITY

Our campuses are wheelchair accessible with lifts. Individual requirements can be discussed with the Additional Learning Needs Coordinator.

SUPPORT THROUGH THE MEDIUM OF WELSH

Your preferences can be discussed with your campus Learning Support Coordinator.

SPECIALIST TECHNOLOGY AND RESOURCES

If you require specialist technology or resources, such as a Roger Touchscreen transmitter, please contact our ALNCo to discuss your individual needs (at least 20 term-time days prior to starting your course, if not earlier).

INDEPENDENCE

Whatever your additional learning need, we will support you to build your skills and independence whilst at our college. Our aim is that you learn to do more things for yourself and make your own decisions, which will support your progress at college and beyond.





20



**SUPPORT
FOR
HIGHER
EDUCATION**



“I will never forget the support offered to me, it has really made a difference.”

HOW DO I ACCESS SUPPORT?

Support is available through the Disabled Students' Allowance (DSA). This is a non-means tested, government funded scheme which may pay for support you might need during your studies. You may be eligible to apply for DSA if you have an additional learning need (such as a Specific Learning Difficulty), a disability or a medical condition.

“Nurturing my writing skills.”

You will need to provide evidence such as a Diagnostic Assessment report by a psychologist or qualified assessor, or a letter from a medical professional. Applicants must meet the definition of 'disability' as set out in the Equality Act 2010.

Our team will need to assist you with your application so please contact your campus Learning Support Coordinator.

Further information is available at www.studentfinancewales.co.uk.

“As an autistic undergraduate I find that my Study Assistant never judges me and supports me in the way I prefer to be supported.”

WHAT SUPPORT IS AVAILABLE?

If you are eligible, support may include:

- One to one specialist teaching
- Access to a Study Assistant
- British Sign Language interpreter
- Specialist equipment
- Assistive technology including software
- Examination adjustments such as extra time

“Thank you for always having my best interests at heart and going the extra mile to support me.”



MEET THE TEAM

We have dedicated teams to support you on each of our 7 campuses.



JULIA GREEN

Additional Learning Needs Coordinator

☎ 01554 748232

✉ julia.green@colegsirgar.ac.uk



JAMIE DAVIES

Wellbeing Manager

☎ 01554 748305

✉ jamie.davies@colegsirgar.ac.uk



BRIAN NABNEY

Aberystwyth

Learning Support Coordinator

☎ 01970 639700

✉ brian.nabney@ceredigion.ac.uk



DARREN SYKES-WILKS

Cardigan

Learning Support Coordinator

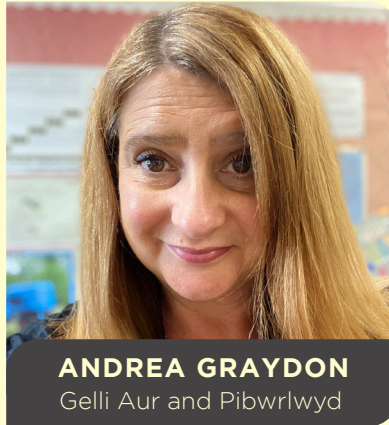
☎ 01239 612032

✉ darren.sykes-wilks@ceredigion.ac.uk



LAURA MAIN
Ammanford

Learning Support Coordinator
☎ 01554 748325
✉ laura.main@colegsirgar.ac.uk



ANDREA GRAYDON
Gelli Aur and Pibwrlwyd

Learning Support Coordinator
☎ 01554 748584
✉ andrea.graydon@colegsirgar.ac.uk



ANDREA SYKES
Graig (Llanelli)

Learning Support Coordinator
☎ 01554 748080
✉ andrea.sykes@colegsirgar.ac.uk



ALISON HOWELL
Jobs Well

Learning Support Coordinator
☎ 01554 748232
✉ alison.howell@colegsirgar.ac.uk



JAYNE HICKS
Jobs Well

Transition Officer
☎ 01554 748232
✉ jayne.hicks@colegsirgar.ac.uk

LETTING US KNOW ABOUT YOUR ADDITIONAL LEARNING NEEDS



Before you attend college

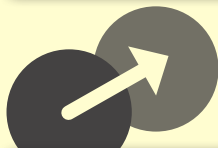
It is important that you let us know about your additional learning needs so that we can make sure we can support you.

Let your school Additional Learning Needs Coordinator (ALNCo) know that you would like us to attend your **school review**.

Contact our ALNCO or Coordinators if you are **unsure** which course you would like to apply for or come along to our open evenings.

Complete the online **Application Form**. Let us know about your additional learning need and if you need adjustments at your interview.

Attend your **interview**. You can discuss your needs with a Course Tutor. A member of the Learning Support team can also be present.



Transition Support

This helps you manage change to a new place of education.

Depending on your needs:

- Personalised campus visits
- Planning your transport to college
- Support with enrolment
- Support with settling into college life.

Whilst at college

You will continue to be at the ♥ of your journey at college.

Learning Support Questionnaire - you can let us know more about your learning needs and preferences.

Individual Development Plan - if you have an IDP we will update it with your preferences about how you wish to be supported at college, and involve you in reviewing your support.

One Page Profile - we will work with you to communicate your preferences to all staff who are in contact with you.

You can contact Learning Support at any time during your journey with us, to let us know if you want to make changes to the way you are supported at college.

